

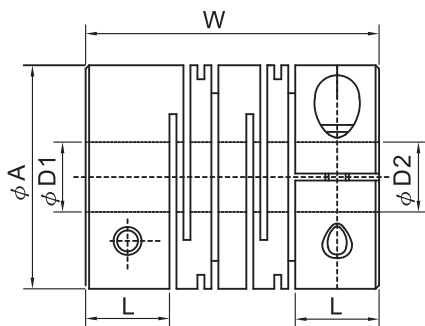
# MFC/MFCS-C Flex couplings



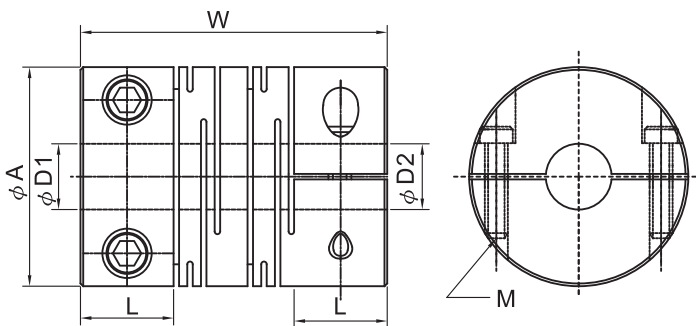
- MFC-C Outside dia :  $\phi 16 \sim \phi 50$  Body : Aluminum alloy
- MFC-C Outside dia :  $\phi 16 \sim \phi 50$  Body : Stainless steel

## features/特性

- 完美單一本體，搖性聯軸器  
Ideal one-body metallic spring flexible couplings
- 零間隙  
Zero backlash
- 藉由彈性作用，完美吸收軸偏移、角偏差軸端部位差  
Complete absorption of eccentricity, angularity, and end-play by spring action.
- 高扭力、高負荷  
High torsional stiffness and response
- 可正逆轉特性  
Identical clockwise and anticlockwise rotational characteristics
- 免保養、抗油、抗化學性  
Maintenance-free, oil and chemical resistant
- 夾鉗式固定  
clamp type
- MFC-C本體：鋁合金材質  
MFC-C Body : Extra Super Duralumin
- MFCS-C本體：不鏽鋼材質  
MFCS-C Body : Stainless steel



外徑  $\phi 16 \sim \phi 32$



外徑  $\phi 40 \sim \phi 50$

## 規格/SPECIFICATION

Product 產品編號	Rated Torque 常用扭矩 (N.m)	Max. Torque 最大扭矩 (N.m)	Max. Rotational Frequency 最高迴轉數 (min <sup>-1</sup> )	Moment* of Inertia 慣性 (kg.m <sup>2</sup> )	Error of Eccentricity 容許偏心量 (mm)	Error of Angularity 容許角偏差 (°)	Error of Shaft End-play 容許軸向位差 (mm)	Mass** 質量 (g)	A	L	W	Stock Bores 標準孔徑 D1xD2(公差H8)		M
												Min D1	MAX D2	
MFC-16C	0.3	0.6	9500	$3.5 \times 10^{-7}$	0.10	2'	$\pm 0.4$	9.1	16	6.5	23	5	6	M2.5
MFC-20C	0.5	1.0	7600	$8.7 \times 10^{-7}$	0.10	2'	$\pm 0.4$	16.5	20	7.5	26	5	8	M2.5
MFC-25C	1.1	2.2	6100	$2.2 \times 10^{-6}$	0.15	2'	$\pm 0.5$	29	25	8.5	31	5	10	M3
MFC-32C	2.0	4.0	4800	$9.1 \times 10^{-5}$	0.15	2'	$\pm 0.5$	67	32	12	41	6	14	M4
MFC-40C	5.0	10.0	3800	$2.9 \times 10^{-4}$	0.20	2'	$\pm 0.5$	138	40	17	56	8	16	M5
MFC-50C	10.0	20.0	3100	$1.3 \times 10^{-4}$	0.20	2'	$\pm 0.5$	260	50	21	71	12	18	M6
MFCS-16C	0.5	1.0	9500	$9.2 \times 10^{-7}$	0.10	2'	$\pm 0.3$	27	16	6.5	23	5	6	M2.5
MFCS-20C	1.0	2.0	7600	$2.5 \times 10^{-6}$	0.10	2'	$\pm 0.3$	45	20	7.5	26	5	8	M2.5
MFCS-25C	2.1	4.2	6100	$7.4 \times 10^{-6}$	0.15	2'	$\pm 0.4$	87	25	8.5	31	5	10	M3
MFCS-32C	3.5	7.0	4800	$2.7 \times 10^{-5}$	0.15	2'	$\pm 0.5$	180	32	12	41	6	14	M4
MFCS-40C	8.0	16.0	3800	$9.0 \times 10^{-5}$	0.20	2'	$\pm 0.5$	350	40	17	56	8	16	M5
MFCS-50C	15.0	30.0	3100	$2.7 \times 10^{-4}$	0.20	2'	$\pm 0.5$	730	50	21	71	12	18	M6

\*Max. Bore Moment of Inertia/最大孔徑時慣性矩  
\*Max. Bore Mass/最大孔徑時質量

Product No:  
MFC-25C-  $\phi 8 \times \phi 10$   
D1 D2

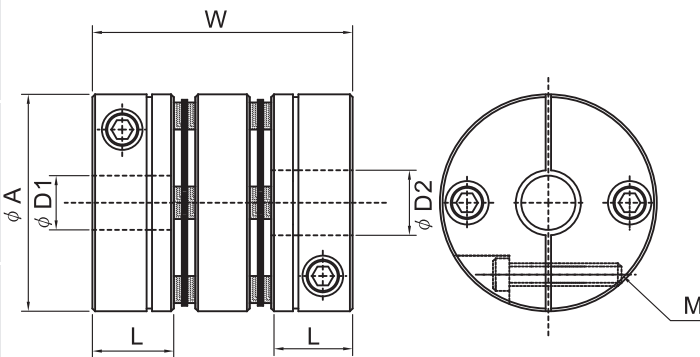
# MHC-C Flex couplings



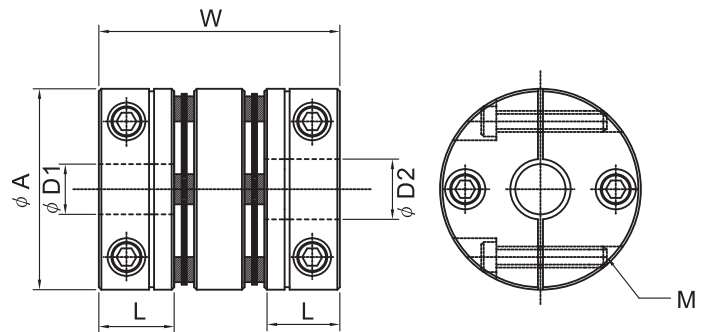
■ MHC-C Outside dia:  $\phi 27 \sim \phi 45$  Body: Aluminum alloy

## features/特性

- 一體化設計，安裝簡單  
Ideal one-body design simple and fast assembly
- 高剛性，高扭矩  
High rigidity, high torque
- 低慣性、無背隙  
Low moment of inertia backlash-free
- 適於中小型伺服馬達精密、定位傳動  
Suitable to small servo system exact transmission
- 具伸縮緩衝及抗震功能  
With function of flexibility and vibration resistance
- 免保養、壽命長  
Long service life maintenance-free
- 夾鉗式固定  
Clamp type
- MHC-C本體：鋁合金材質



外徑  $\phi 27 \sim \phi 35$



外徑  $\phi 40 \sim \phi 95$

## 規格/SPECIFICATIONS

Unit:mm

Product 產品編號	Rated Torque 常用扭矩 (N.m)	Max. Torque 最大扭矩 (N.m)	Max. Rotational Frequency 最高迴轉數 (min <sup>-1</sup> )	Moment* of Inertia 慣性 (kg.m <sup>2</sup> )	Error of Eccentricity 容許偏心率 (mm)	Error of Angularity 容許角偏差 (°)	Mass** 質量 (g)	A	L	W	Stock Bores 標準孔徑 D1xD2(公差H8)		M
											Min D1	MAX D2	
MHC-27C	1.8	3.6	10000	3.0X10 <sup>-6</sup>	0.15	2°	35	27	11	35	5	10	M3
MHC-35C	4.0	8.0	10000	10.5X10 <sup>-6</sup>	0.17	2°	62	35	12	38	6	14	M3
MHC-40C	7.0	14.0	10000	26X10 <sup>-6</sup>	0.22	2°	116	40	15	48	8	16	M4
MHC-45C	10.0	20.0	10000	38X10 <sup>-6</sup>	0.22	2°	131	45	15	48	10	19	M4
MHC-50C	16.0	32.0	10000	88X10 <sup>-6</sup>	0.24	2°	220	50	20	62	12	22	M5
MHC-57C	26.0	52.0	10000	142.5X10 <sup>-6</sup>	0.27	2°	310	57	20	62	12	25	M5
MHC-68C	62.0	124.0	10000	376X10 <sup>-6</sup>	0.35	2°	565	68	24	74	14	32	M6
MHC-82C	100.0	200.0	10000	1080X10 <sup>-6</sup>	0.55	2°	1300	82	30	98	19	35	M8
MHC-95C	180.0	360.0	10000	1940X10 <sup>-6</sup>	0.55	2°	1500	95	30	98	22	45	M8

\*Max. Bore Moment of Inertia/最大孔徑時慣性矩

\*\*Max. Bore Mass/最大孔徑時質量

Product No:

MHC-35C-  $\phi 8 \times \phi 10$   
D1 D2

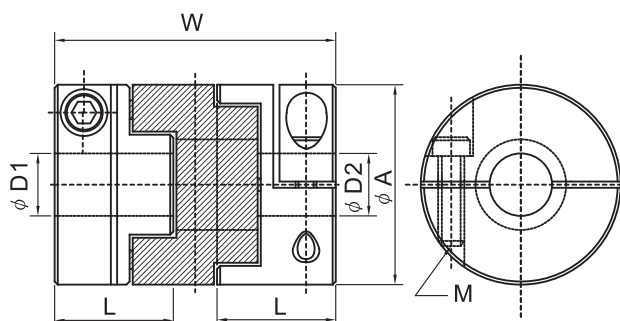
# MFL-C Flex couplings



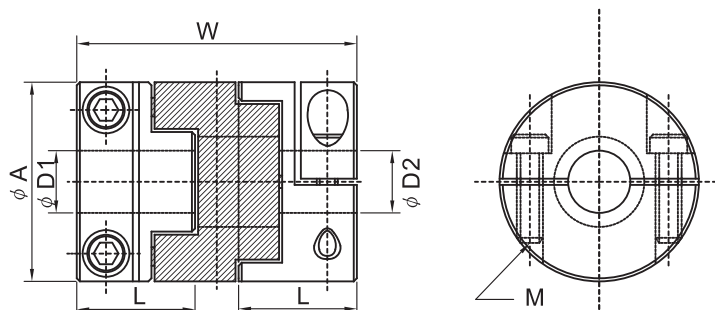
■ MFL-C Outside dia :  $\phi 16 \sim \phi 50$  HUB : Aluminum alloy

## features/特性

- 藉轂和間隔環的滑動，取得一極大允許偏心率及角偏差差  
Slippage of hub and spacer enables high allowable eccentricity and angularity
- 軸負荷小  
Minimized load on shafts
- 高扭力元件，高靈敏反應  
High torsional stiffness and excellent response
- 簡單設計、容易組裝  
Simple configuration enables easy assembly
- 免保養、優異抗油性和絕緣性  
Maintenance-free excellent resistance to oil and electrical insulation
- 標準品附有不同孔徑  
Standardized models with different finished bores
- 夾鉗式固定  
Clamp type
- MFL-C本體：鋁合金材質  
MFL-C Body : Aluminum alloy



外徑  $\phi 16 \sim \phi 32$



外徑  $\phi 40 \sim \phi 50$

## 規格/SPECIFICATION

Product 產品編號	Rated Torque 常用扭矩 (N.m)	Max. Torque 最大扭矩 (N.m)	Max. Rotational Frequency 最高迴轉數 (min <sup>-1</sup> )	Moment* of Inertia 慣性 (kg.m <sup>2</sup> )	Error of Eccentricity 容許偏心率 (mm)	Error of Angularity 容許角偏差 (°)	Mass** 質量 (g)	A	L	W	Stock Bores 標準孔徑 D1xD2(公差H8)		M
											Min D1	MAX D2	
											Unit:mm		
MFL-16C	0.7	1.4	9500	5.0X10 <sup>-7</sup>	1.0	3°	11.5	16	13	29	5	6	M2.5
MFL-20C	1.2	2.4	7600	1.3X10 <sup>-6</sup>	1.5	3°	19	20	14	33	5	8	M2.5
MFL-25C	2.0	4.0	6100	3.9X10 <sup>-6</sup>	2.0	3°	36	25	17	39	5	10	M3
MFL-32C	4.5	9.0	4800	1.2X10 <sup>-5</sup>	2.5	3°	68	32	19	45	6	14	M4
MFL-40C	9.0	18.0	3800	3.5X10 <sup>-5</sup>	3.0	3°	130	40	23	50	10	16	M5
MFL-50C	18.0	36.0	3100	1.0X10 <sup>-4</sup>	3.5	3°	230	50	27	58	12	20	M6

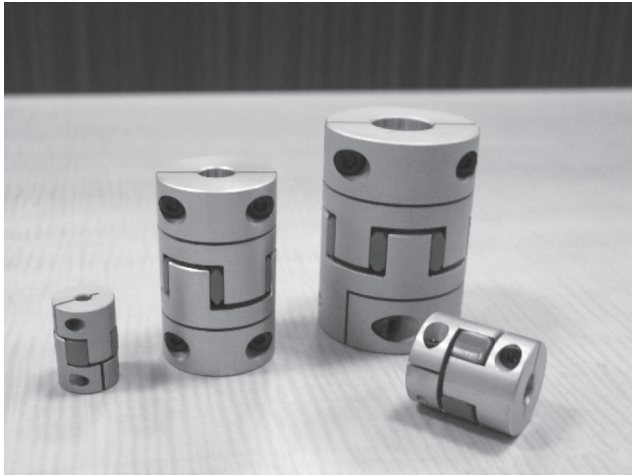
\*Max. Bore Moment of Inertia/最大孔徑時慣性矩

\*\*Max. Bore Mass/最大孔徑時質量

Product No:  
MFL-25C-  $\frac{\phi 8}{D1} \times \frac{\phi 10}{D2}$

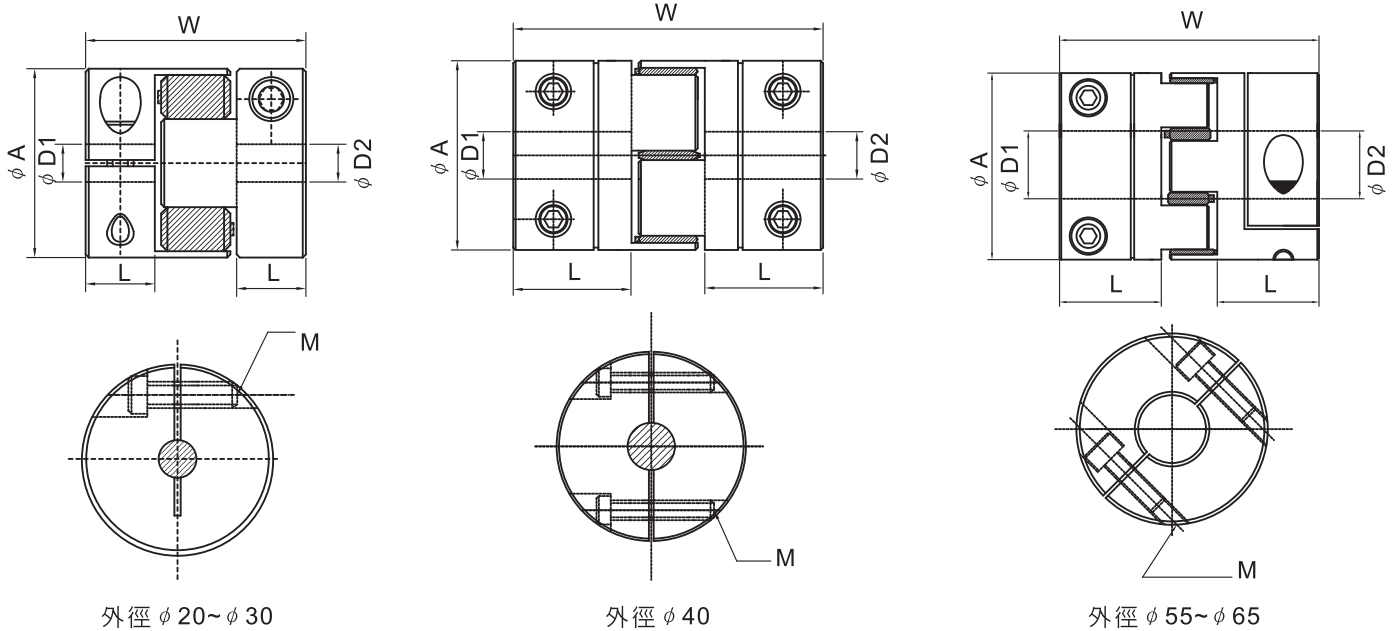
2相  
步進馬達  
2相步進  
驅動器  
5相  
步進馬達  
5相步進  
驅動器  
位置  
控制器  
Sankyo  
伺服馬達  
Kingsevo  
伺服馬達  
DC  
無刷馬達  
X-Y Table  
定位滑台  
USC 行星式  
減速機  
USC  
旋轉平台  
聯軸器  
COGNEX  
視覺系統

# MTC-C Flex couplings



## Features/特性

- 高扭力、高負荷  
High torsional stiffness and response
- 可正逆轉特性  
Identical clockwise and anticlockwise rotational characteristics
- 低慣性、無背隙  
Low moment of inertia backlash-free
- 適於中小型伺服馬達精密、定位傳動  
Suitable to small servo system exact transmission
- 免保養、壽命長  
Long service life maintenance-free
- 夾鉗式固定  
Clamp type
- MTC-C本體：鋁合金材質  
MTC-C Body : Aluminum alloy



## 規格/SPECIFICATION

Product 產品編號	Rated Torque 常用扭矩 (N.m)	Max. Torque 最大扭矩 (N.m)	Max.Rotational Frequency 最高迴轉數 (min <sup>-1</sup> )	Moment* of Inertia 慣性 (kg.m <sup>2</sup> )	Error of Eccentricity 容許偏心率 (mm)	Error of Angularity 容許角偏差 (°)	Mass** 質量 (g)	A	L	W	Stock Bores 標準孔徑 D1xD2(公差H8)		M
											Min D1	MAX D2	
											Unit:mm		
MTC-20C-RD	5.0	10.0	7600	1.1X10 <sup>-6</sup>	0.1	1°	19	20	10	30	5	8	M2.5
MTC-30C-RD	12.5	25.0	5100	6.2X10 <sup>-6</sup>	0.1	1°	50	30	11	35	6	14	M4
MTC-40C-RD	17.0	34.0	3800	3.9X10 <sup>-5</sup>	0.1	1°	160	40	25	66	8	19	M5
MTC-55C-RD	60.0	120.0	2800	1.6X10 <sup>-4</sup>	0.1	1°	330	55	30	78	10	25	M6
MTC-65C-RD	160.0	320.0	2350	3.8X10 <sup>-4</sup>	0.1	1°	560	65	35	90	12	35	M8

\*Max.Bore Moment of Inertia/最大孔徑時慣性矩  
\*Max.Bore Mass/最大孔徑時質量

Product No:  
MTC-30C-RD  $\frac{\phi 8}{D1} \times \frac{\phi 10}{D2}$